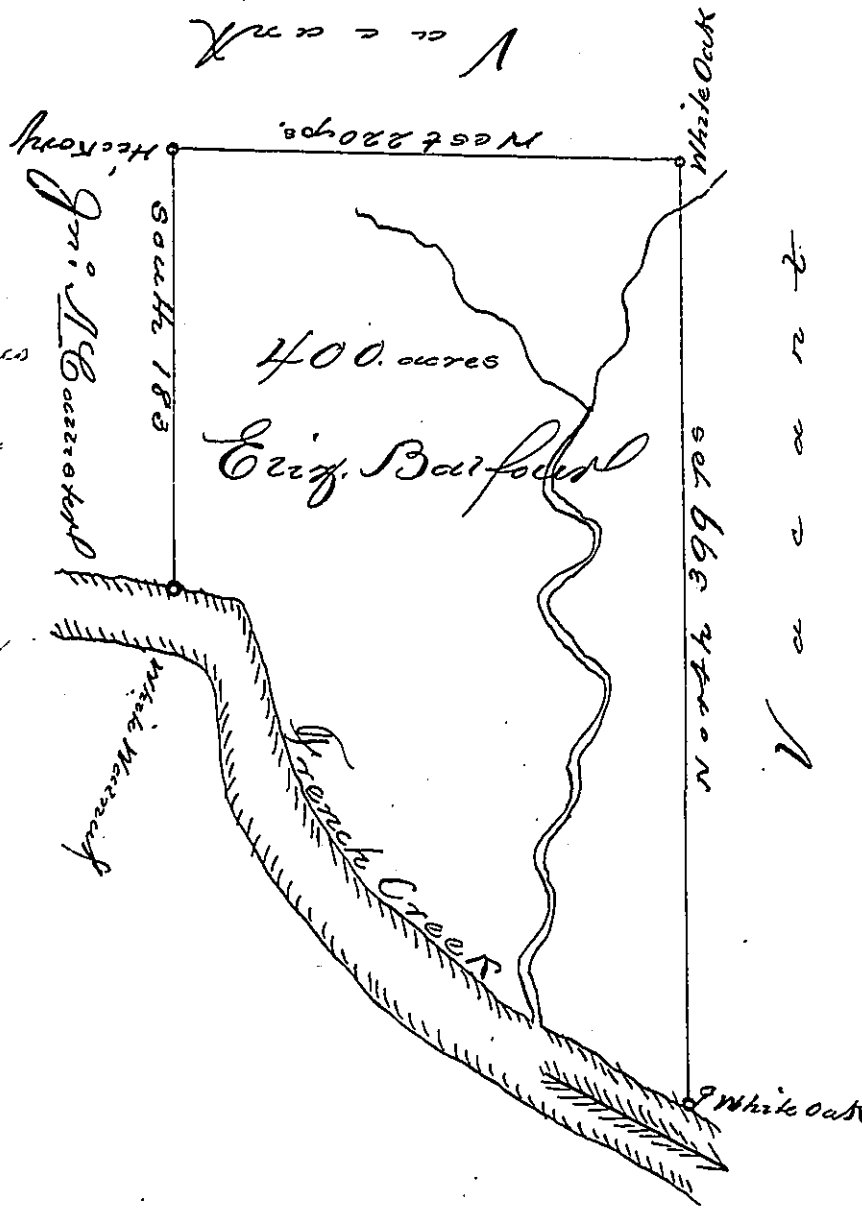


The courses and distances
down French Creek,
Beginning at a White
Oak. Hence

- S. 71. E. 30. 70
- S. 20. E. 96. 70
- S. 145. E. 60. 70
- S. 57. E. 138 70 to a
White Oak



The above is a Draught of a Tract of Land Survey'd the 13 day of April
1795 by virtue of Improvement for Elizabeth Barford situate on the
waters of French in District N. 3. Containing 400 acres with
the usual allowance, which Improvement was effected the 15
day of August, 1793.

Ben Storkley d.f.

To Daniel Broadhead Esqr

J. G.

IN TESTIMONY that the above is a copy of the original remaining on file in
the Department of Internal Affairs of Pennsylvania, made
conformably to an Act of Assembly approved the 16th day of
February, 1833, I have hereunto set my Hand and caused
the Seal of said Department to be affixed at Harrisburg,
this fourth day of June, 1901,

James W. Jatta
Secretary of Internal Affairs.